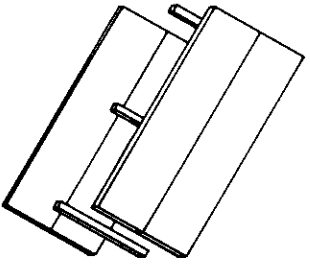
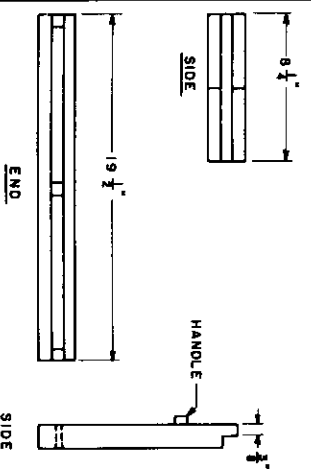


**FIVE DEEP BROOD
FRAME HIVE**
NOT TO SCALE

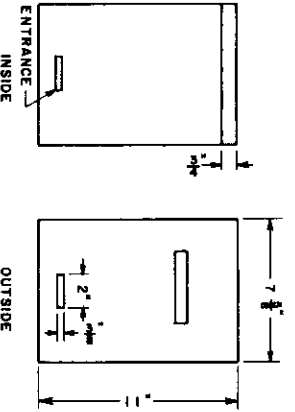
EXPLODED ISOMETRIC VIEW
NOT TO SCALE



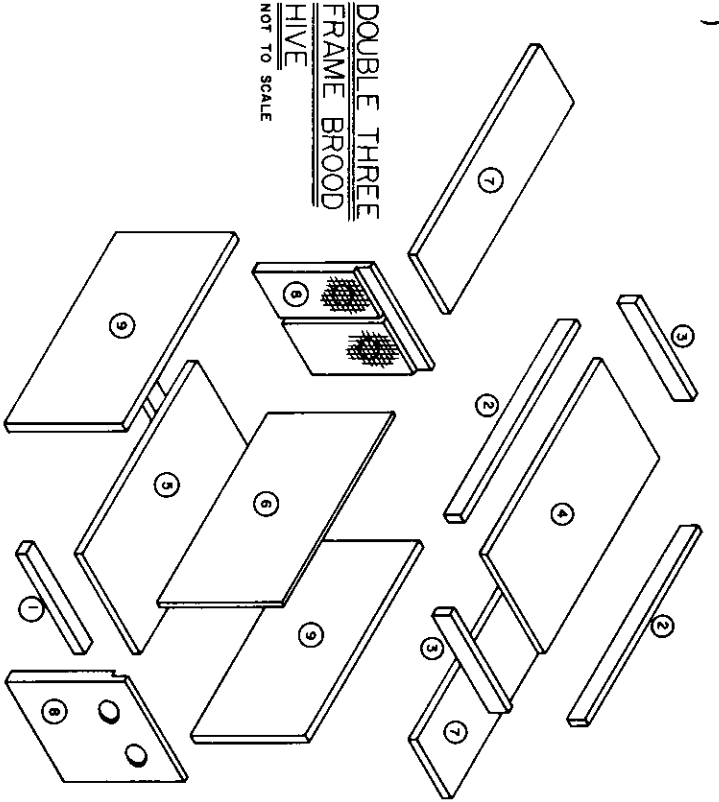
EXPLODED VIEW OF TOP
NOT TO SCALE



VIEW OF TOP

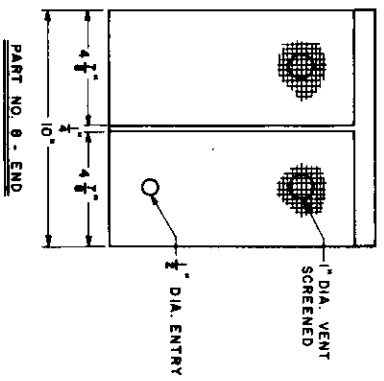
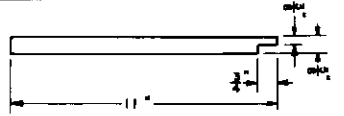


VIEW OF END



**DOUBLE THREE
FRAME BROOD
HIVE**
NOT TO SCALE

EXPLODED ISOMETRIC VIEW
NOT TO SCALE



PART NO. 8 - END

PART NO.	LOCATION	SIZE
1	BOTTOM SUPPORT	1 1/2" x 10" x 1"
2	TOP RAIL	1 1/2" x 19 1/2" x 1"
3	TOP RAIL	1 1/2" x 12" x 1"
4	TOP	11" x 19 1/2" x 1"
5	BOTTOM	10" x 18 1/2" x 1"
6	DIVIDER	10" x 18 1/2" x 1"
7	INTER-TOP	4" x 18 1/2" x 1"
9	SIDE	11" x 19 1/2" x 1"

- NOTE:**
- PART NO. 6 AND NO. 7 TO BE REMOVABLE, DO NOT GLUE OR NAIL.
 - PARTS NO. 1, 2 AND 3 MADE FROM 1 x 2 PINE OR CYPRESS.
 - PART NO. 8 MADE FROM 1/2" EXT. A-A PLYWOOD.
 - ALL OTHER PARTS OF 1/2" EXT. A-A PLYWOOD.
 - TREAT ALL PARTS WITH PENTA SOLUTION.

NOTE: BASED ON UNIV. OF FLA. PLAN NOS. 907 AND 924-R

COOPERATIVE EXTENSION WORK IN
AGRICULTURE AND HOME ECONOMICS

UNITED STATES DEPARTMENT OF AGRICULTURE COOPERATING

5 8 6 DEEP BROOD HIVE

EX. 6527 SHEET 1 OF 1